

COUNTERBALANCED

4-wheel engine trucks torque converter



M315 - 318

- 1.5t - 1.8t
- 6970 mm
- DIESEL / LPG

M320 - 325

- 2.0t - 2.5t
- 6970 mm
- DIESEL / LPG

M330 - 335

- 3.0t - 3.5t
- 6970 mm
- DIESEL / LPG

4-wheel engine trucks hydrostatic



Drago 150 - 180 - 200

- 1.5t - 1.8t - 2.0t
- 6170 mm
- DIESEL / LPG

Drago H 250 - 300 - 350

- 2.5t - 3.0t - 3.5t
- 7960 mm
- DIESEL / LPG

Drago E 250 - 300 - 350

- 2.5t - 3.0t - 3.5t
- 7960 mm
- DIESEL / LPG



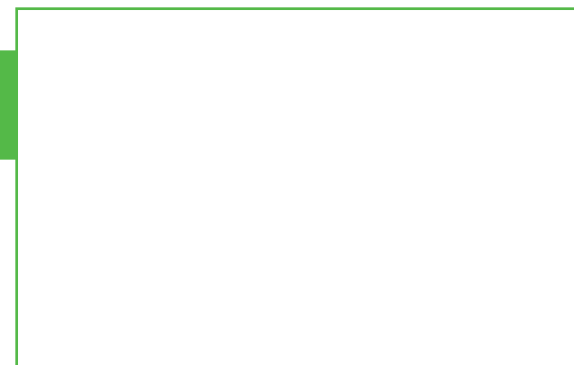
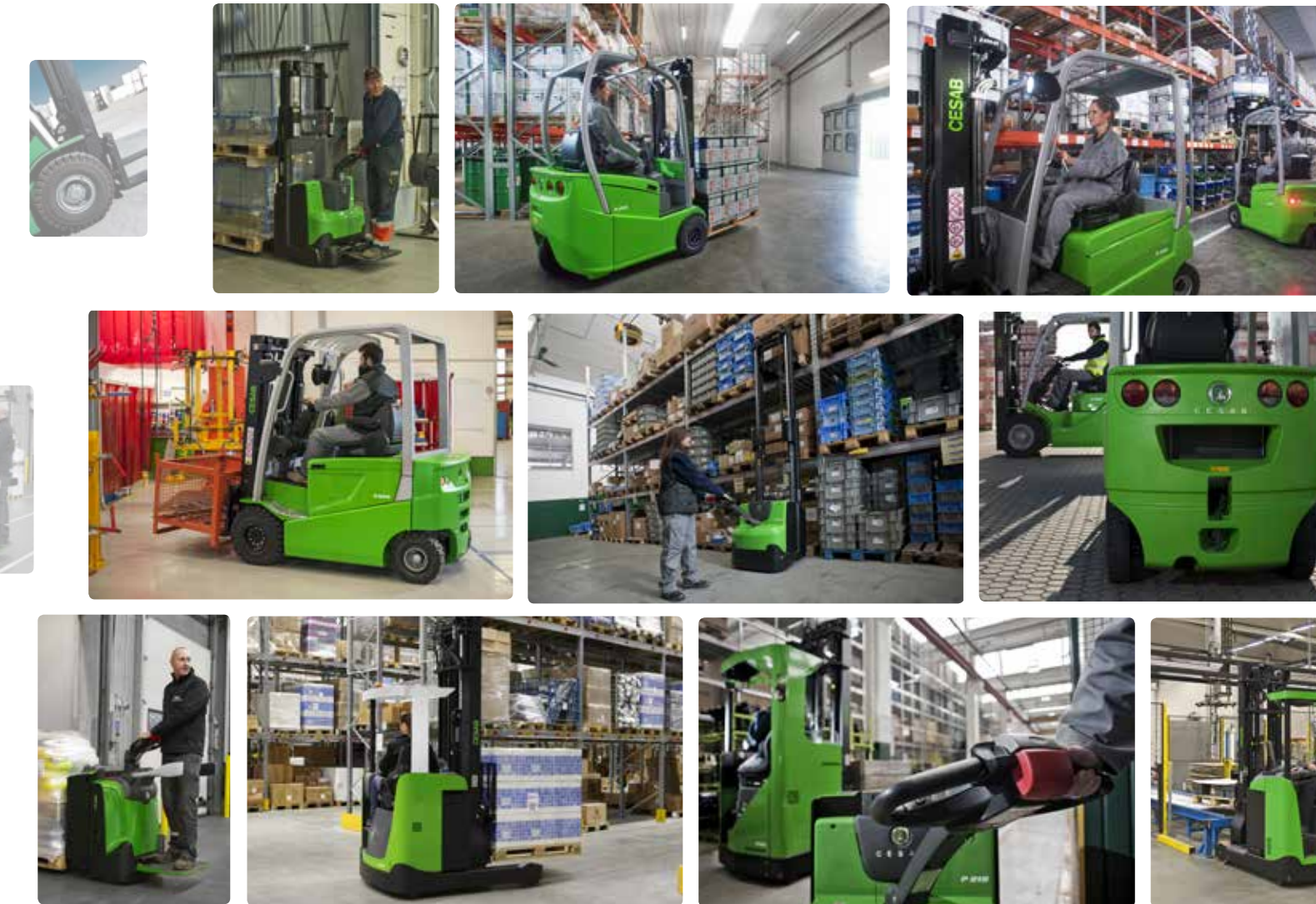
Drago 400 - 450 - 500

- 4.0t - 4.5t - 5.0t
- 6650 mm
- DIESEL

The data in this specification sheet was determined based on our standard testing conditions. Operating performance may vary depending on the actual specification and condition of the truck, as well as the condition of the operating area. Availability and specifications are determined regionally and are subject to change without notice. Please contact your authorised CESAB distributor for further details. DUNGE_EU_2014 / PAB FORKHOE_V39 - Copyright CESAB Material Handling Europe.

CESAB PRODUCT RANGE

Counterbalanced and Warehouse Equipment



COUNTERBALANCED

3-wheel electric trucks



BIT 800 - 1000 - 1200

⚠ 0.8t - 1.0t - 1.2t
 ↑ 5965 mm
 🔋 24V / 800 Ah

B210 - 213 - 215

⚠ 1.0t - 1.25t - 1.5t
 ↑ 6470 mm
 🔋 24V / 1000 Ah

B315 - 316 - 316L - 318 - 318L - 320

⚠ 1.5t - 1.6t - 1.8t - 2.0t
 ↑ 7470 mm
 🔋 48V / 750 Ah

4-wheel electric trucks



B415 - 416 - 416L - 418 - 418L - 420

⚠ 1.5t - 1.6t - 1.8t - 2.0t
 ↑ 7470 mm
 🔋 48V / 750 Ah

B620 - 625 - 625L - 630 - 630L - 635

⚠ 2.0t - 2.5t - 3.0t - 3.5t
 ↑ 6500 mm
 🔋 80V / 775 Ah

Mak 400 - 450 - 500

⚠ 4.0t - 4.5t - 5.0t
 ↑ 7450 mm
 🔋 80V / 775 Ah

Compact electric trucks



cenTAURO 48 160L - 200L

⚠ 1.6t - 2.0t
 ↑ 6970 mm
 🔋 48V / 840 Ah

cenTAURO 80 250 - 300

⚠ 2.5t - 3.0t
 ↑ 6860 mm
 🔋 80V / 735 Ah

B860 - 870 - 885

⚠ 6.0t - 7.0t - 8.5t
 ↑ 6450 mm
 🔋 80V / 1250 Ah

Heavy duty electric truck

WAREHOUSE EQUIPMENT

Hand pallet trucks



CE200 - 230 - 300

⚠ 2.0t - 2.3t - 3.0t
 ⓘ The 2.3t model is also available with low forks, quicklift feature and handbrake. Low forks are standard on the 2.0t model.

CE200ST

⚠ 2.0t
 ⓘ Stainless steel version.

H210 - 210E

⚠ 1.0t
 ↑ 800 mm
 ⓘ Manual and electric scissor lifters.

Powered pallet trucks



P113

⚠ 1.3t
 🔋 24V / 63 Ah

P214 - 216 - 218 - 220 - 225

⚠ 1.4t - 1.6t - 1.8t - 2.0t - 2.5t
 🔋 24V / 300 Ah
 ⓘ Optional operator platform available for P220.

P320 - 322

⚠ 2.0t - 2.2t
 🔋 24V / 600 Ah
 ⓘ Available with a choice of travel speed (6, 8, 10 km/h).

Reach trucks



R112 - 114 - 116

⚠ 1.2t - 1.4t - 1.6t
 ↑ 8500 mm
 🔋 48V / 620 Ah
 ⓘ Also available as a drive-in version with narrow overhead guard.

R212 - 214 - 216

⚠ 1.2t - 1.4t - 1.6t
 ↑ 8500 mm
 🔋 48V / 620 Ah
 ⓘ Also available as a cold store version as well as drive-in version with narrow overhead guard.

R314 - 316 - 318 - 320 - 325

⚠ 1.4t - 1.6t - 1.8t - 2.0t - 2.5t
 ↑ 12500 mm
 🔋 48V / 930 Ah
 ⓘ Also available as a cold store version, with or without heated cabin, as well as a drive-in version with narrow overhead guard.

Powered stacker trucks



S110 - 110S

⚠ 1.0t
 ↑ 2000 mm
 🔋 24V / 63 Ah
 ⓘ S110S: straddle support arm version.

S208L

⚠ 0.8t
 ↑ 1580 mm
 🔋 24V / 230 Ah
 ⓘ Can lift up to 2000 kg when lifting with the support arms only. Available with optional automatic height adjustment.

S210 - 212 - 214

⚠ 1.0t - 1.2t - 1.4t
 ↑ 4755 mm
 🔋 24V / 300 Ah
 ⓘ Optional operator platform available.

S212S

⚠ 1.2t
 ↑ 4755 mm
 🔋 24V / 300 Ah
 ⓘ Straddle support arms. Optional operator platform also available.



S212L - 214L

⚠ 1.2t - 1.4t
 ↑ 4755 mm
 🔋 24V / 300 Ah
 ⓘ Elevating support arms. Optional operator platform available.

S220D

⚠ 1.0t
 ↑ 2100 mm
 🔋 24V / 300 Ah
 ⓘ Double stacker, lifts 800 + 1200 kg lifting with forks + support arms or 2000 kg when lifting with the support arms only. Optional operator platform available.

S313 - 316 - 320

⚠ 1.25t - 1.6t - 2.0t
 ↑ 5400 mm
 🔋 24V / 425 Ah
 ⓘ Also available as a walkie version (without platform and longer tiller arm).

S313L - 316L - 320L

⚠ 1.25t - 1.6t - 2.0t
 ↑ 5400 mm
 🔋 24V / 425 Ah
 ⓘ Elevating support arms. Also available as a walkie version (without platform and longer tiller arm).

Compact electric trucks



S314S

⚠ 1.35t
 ↑ 5400 mm
 🔋 24V / 425 Ah
 ⓘ Adjustable straddle support arms. Also available as a walkie version (Without platform and longer tiller arm).

Legend

⚠	Rated capacity	ⓘ	Additional info
↑	Maximum lifting height	🔋	Fuel type
🔋	Maximum battery capacity	←N	Nominal draw-bar pull